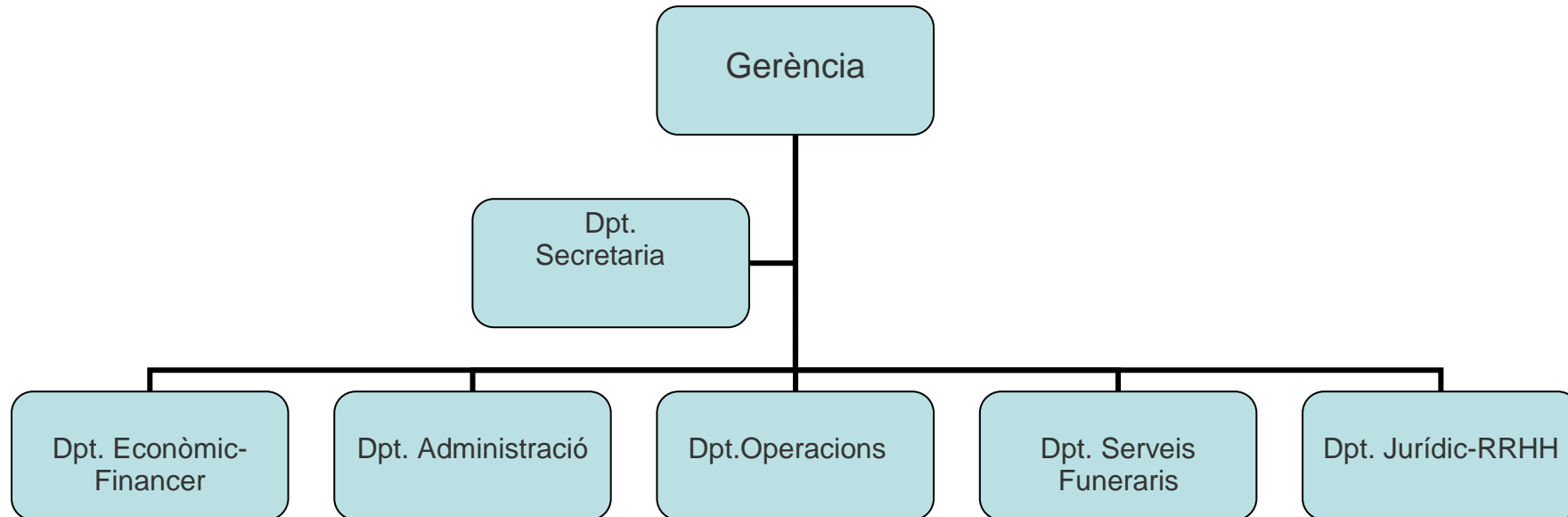
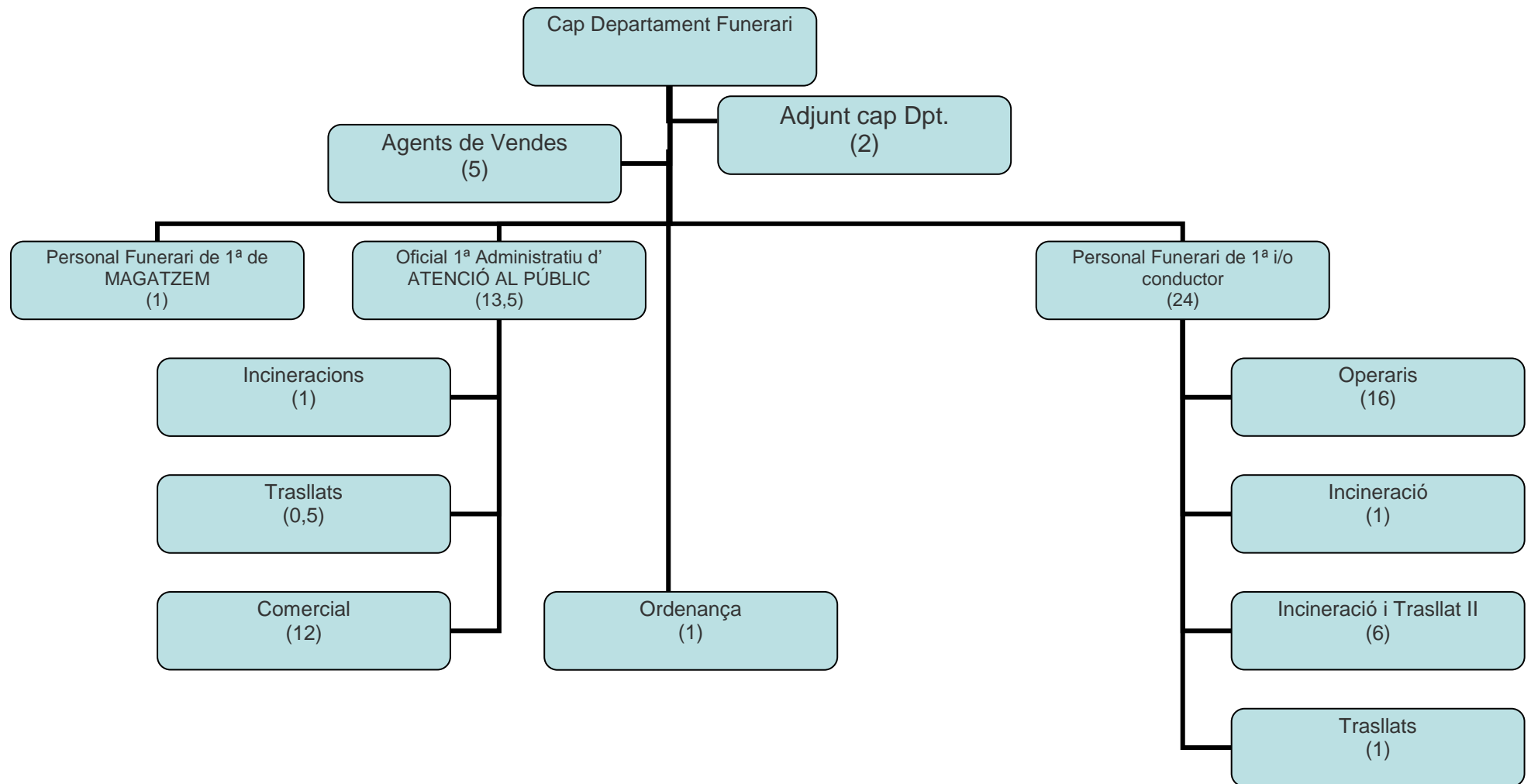




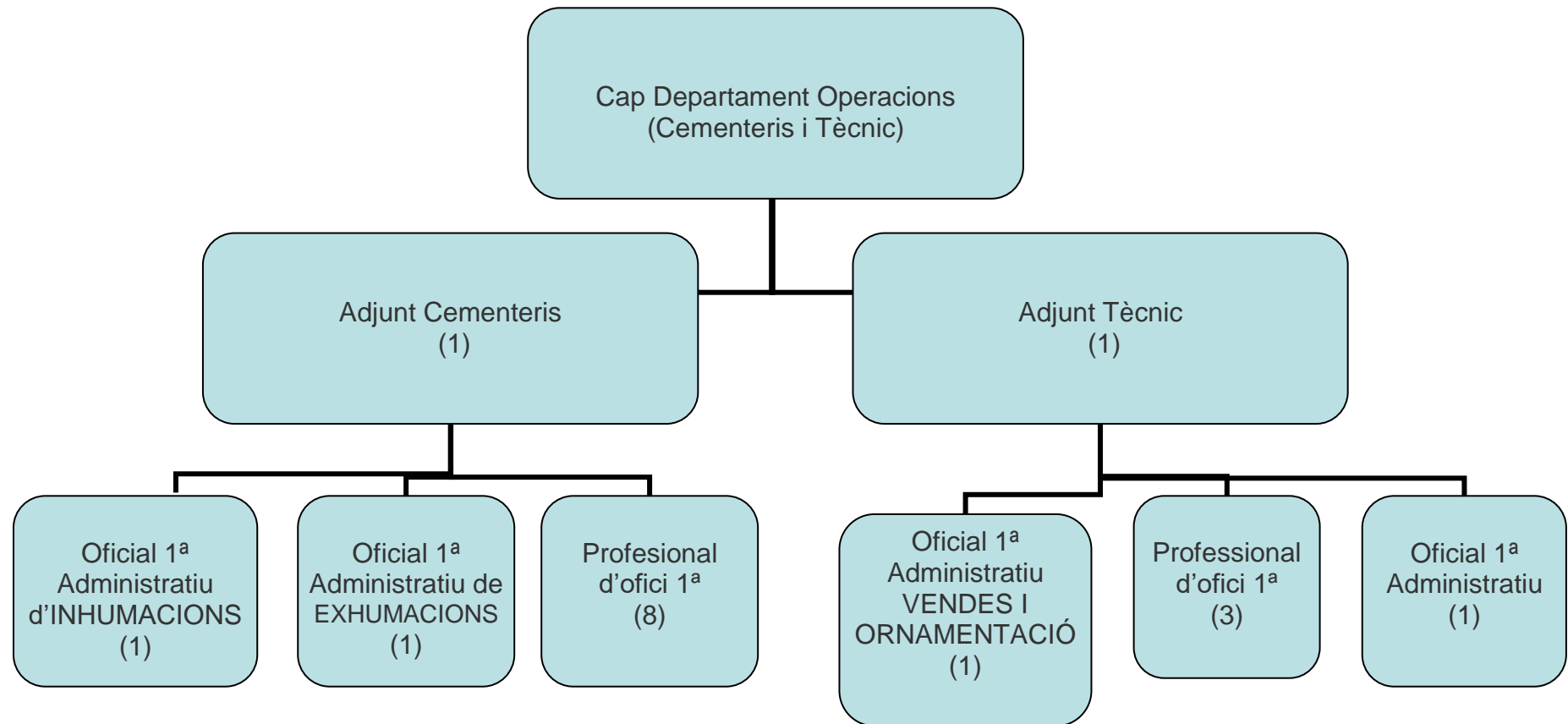
EMPRESA FUNERÀRIA MUNICIPAL, S. A.

ORGANIGRAMA NOVEMBRE 2022

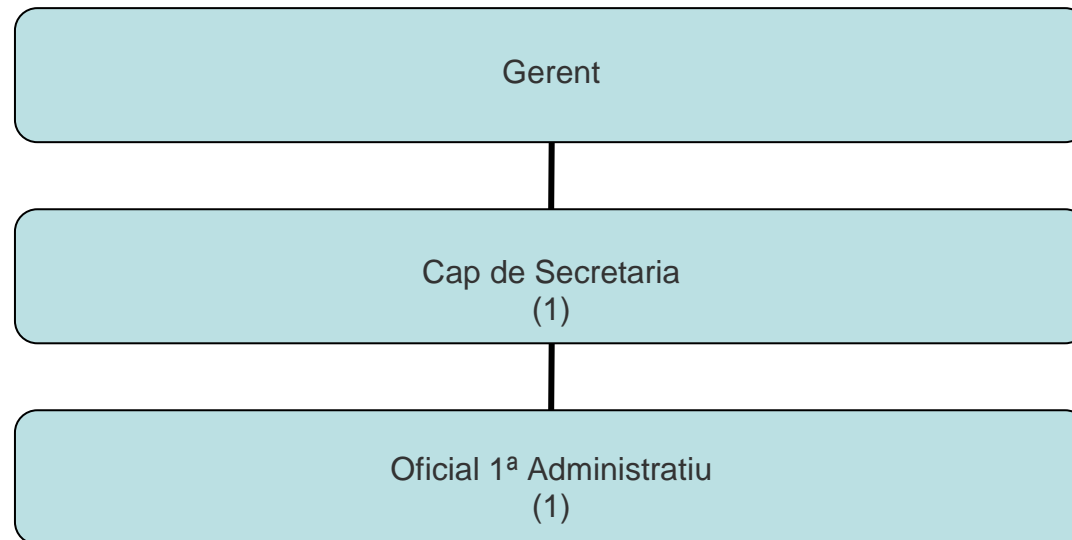


ESTRUCTURA DEPARTAMENT SERVEIS FUNERARIS


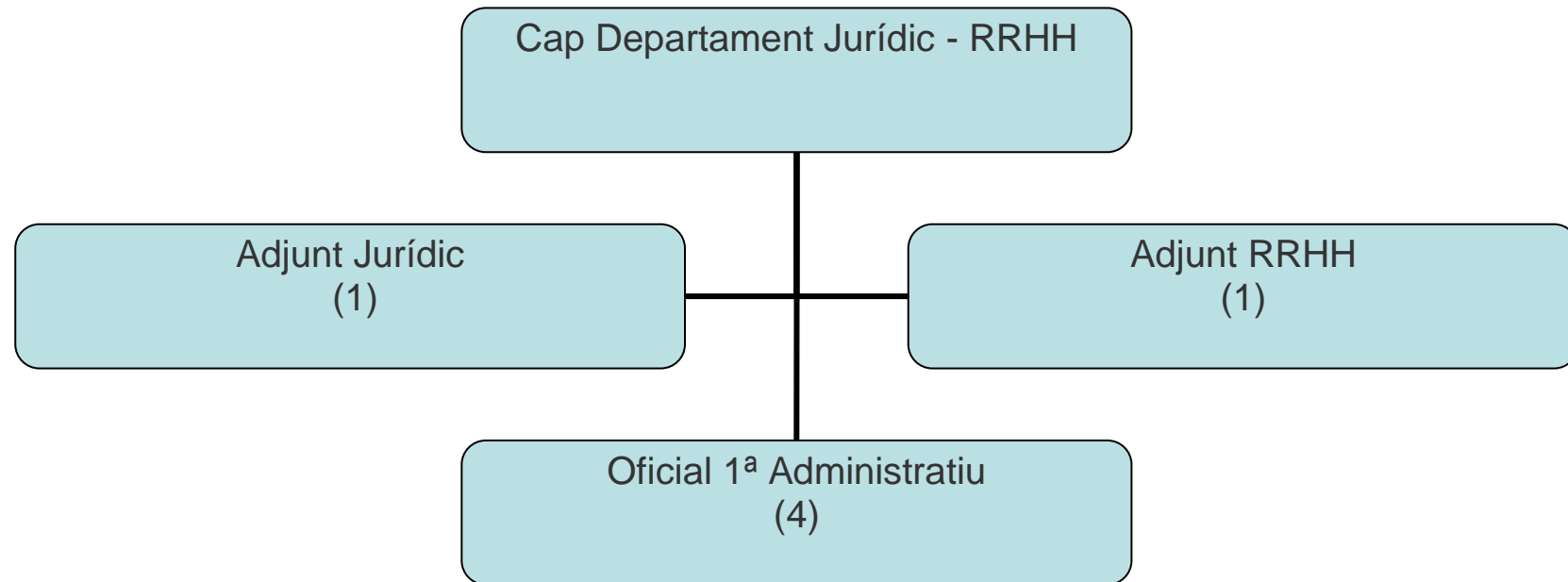
TOTAL PERSONAL 47,5



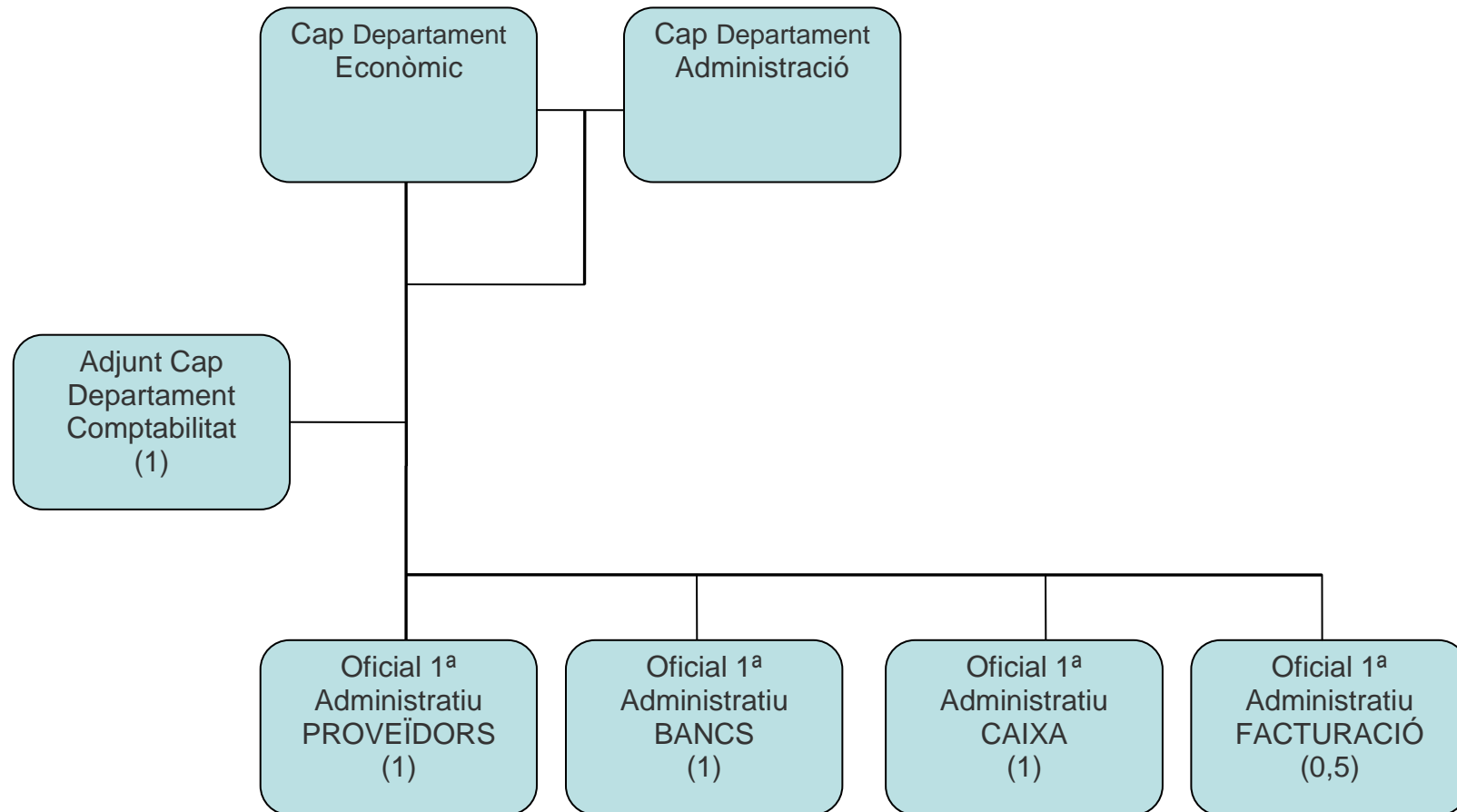
TOTAL PERSONAL 18

ESTRUCTURA DEPARTAMENT SECRETARIA/SERVEIS GENERALS

TOTAL PERSONAL 3

ESTRUCTURA DEPARTAMENT JURÍDIC-RRHH

TOTAL PERSONAL 7

ESTRUCTURA DEPARTAMENT ECONÒMIC-FINANCER

TOTAL PERSONAL 6,5